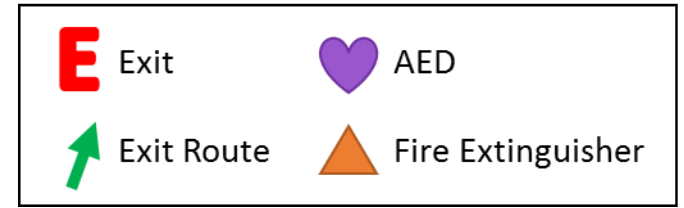


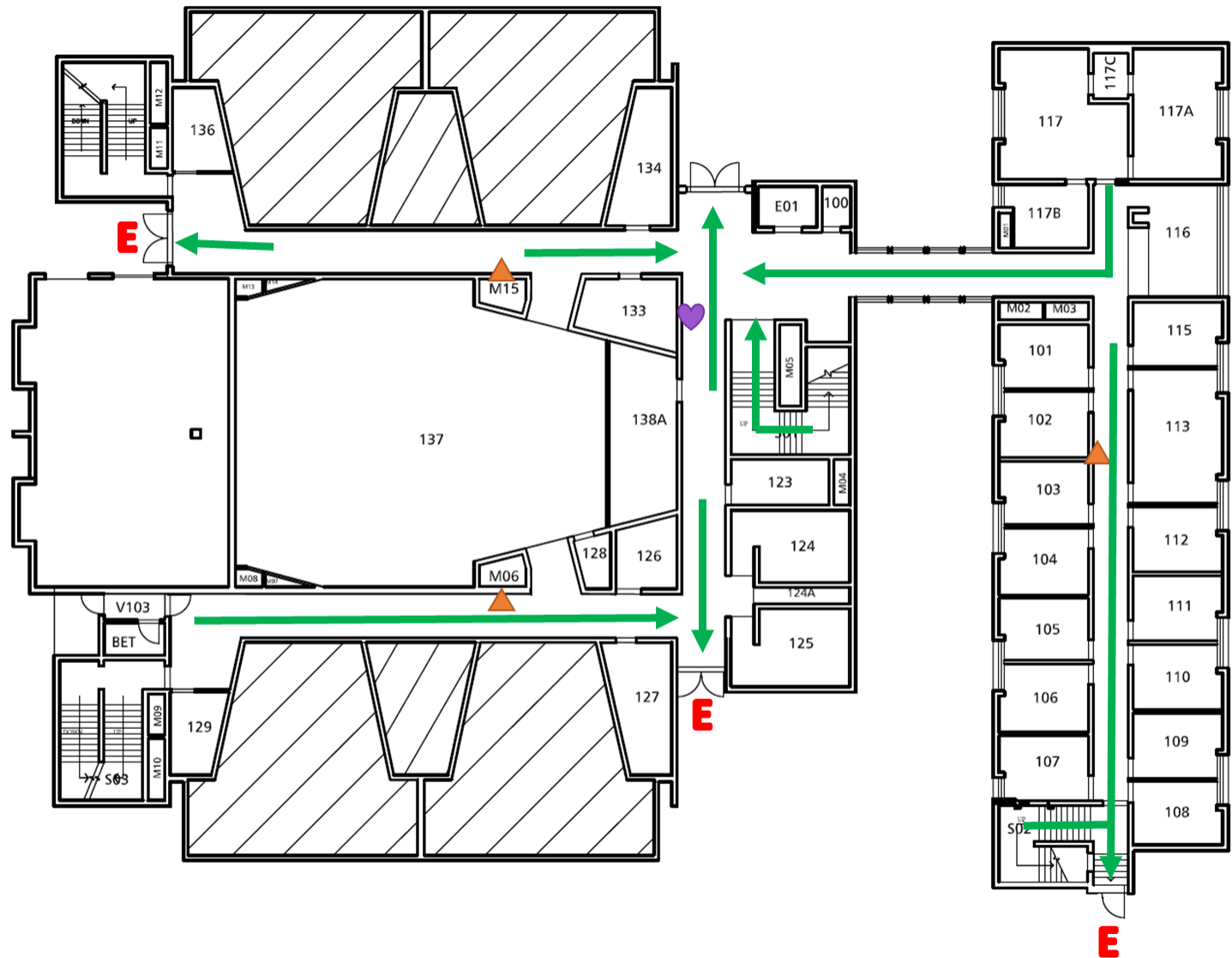
Kingston Hall – 1st Floor

Evacuation Routes

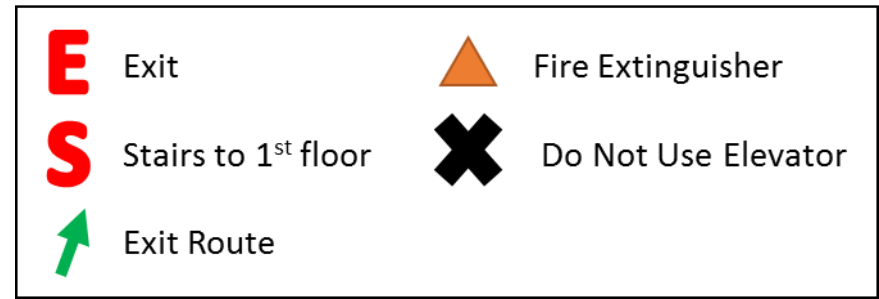


Evacuation Safety Information.

- In case of fire, bomb threat, or other evacuation, close windows and doors and move to the nearest exit.
- Once outside, move away from the building and avoid blocking entrances or driveways.
- Have a location set to meet your class or department so that everyone can be accounted for.
- If anyone is missing or had to remain in the building, notify onsite authorities of their location (or presumed location if missing).
- Do not go back into the building until officials tell you it is safe.
- If someone is hurt and not in imminent danger, do not move them. Contact rescue personnel and tell them where the person is located.

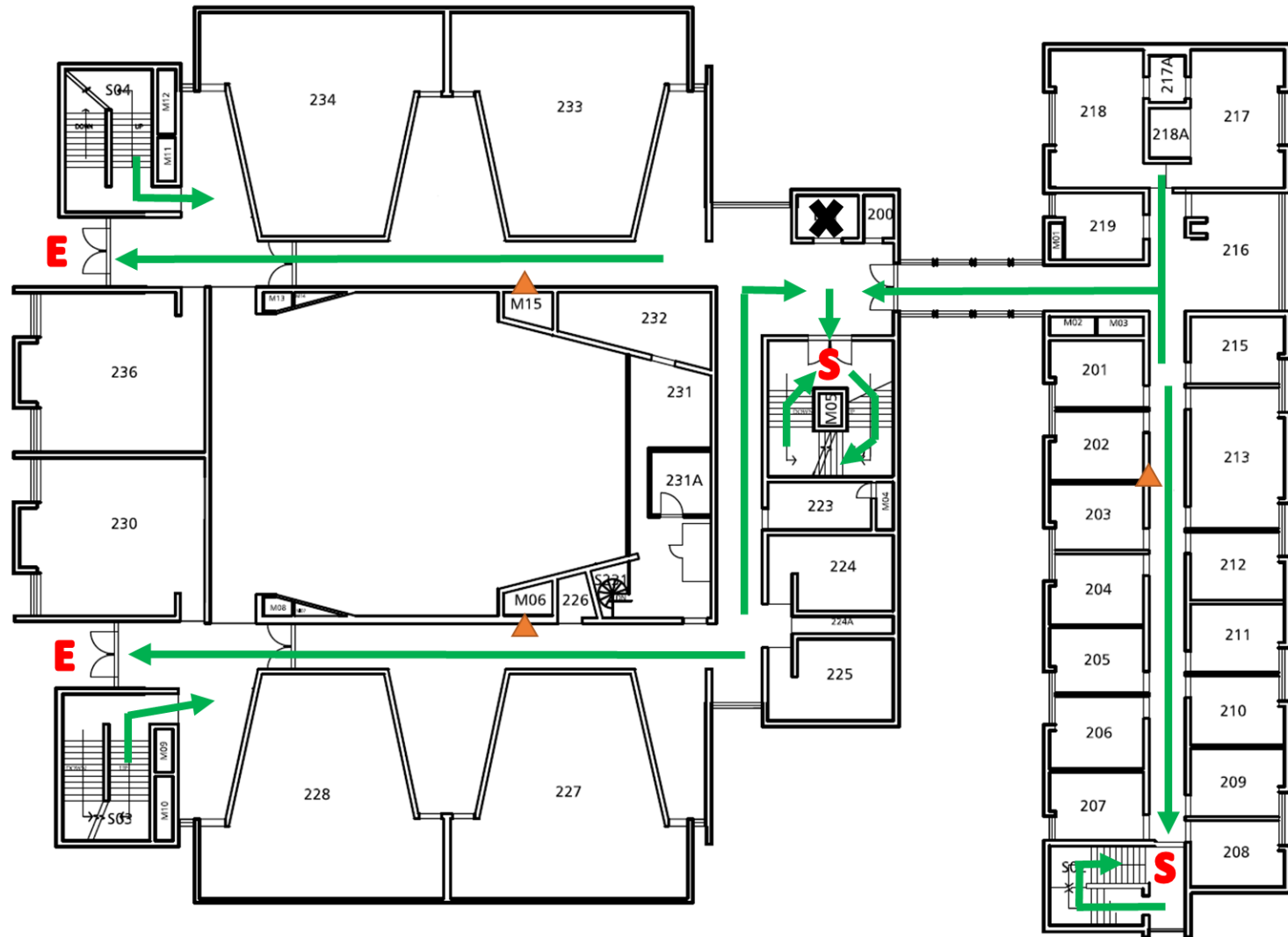


Kingston Hall – 2nd Floor Evacuation Routes



Evacuation Safety Information.

- Do not use the elevator in an emergency
- In case of fire, bomb threat, or other evacuation, close windows and doors and move to the nearest exit.
- Once outside, move away from the building and avoid blocking entrances or driveways.
- Have a location set to meet your class or department so that everyone can be accounted for.
- Do not go back into the building until officials tell you it is safe.
- If someone is hurt and not in imminent danger, do not move them. Contact rescue personnel and tell them where the person is located.
- AED is located on 1st floor.



Kingston Hall – 3rd Floor

Evacuation Routes



Evacuation Safety Information.

- Never use the elevator in an emergency.
- If you are unable to evacuate during an emergency:
 - Move into the stairwell and make sure the door is closed behind you.
 - Call 911 on a cell phone if you have one.
 - Have someone going down the stairs let emergency responders know you are waiting in the stairwell.
- AED is located on the 1st floor.



Make sure you know what floor you need to exit onto when taking the stairs!
 Kingston Hall has exits on the second floor for half of the building and the first floor for the other half.